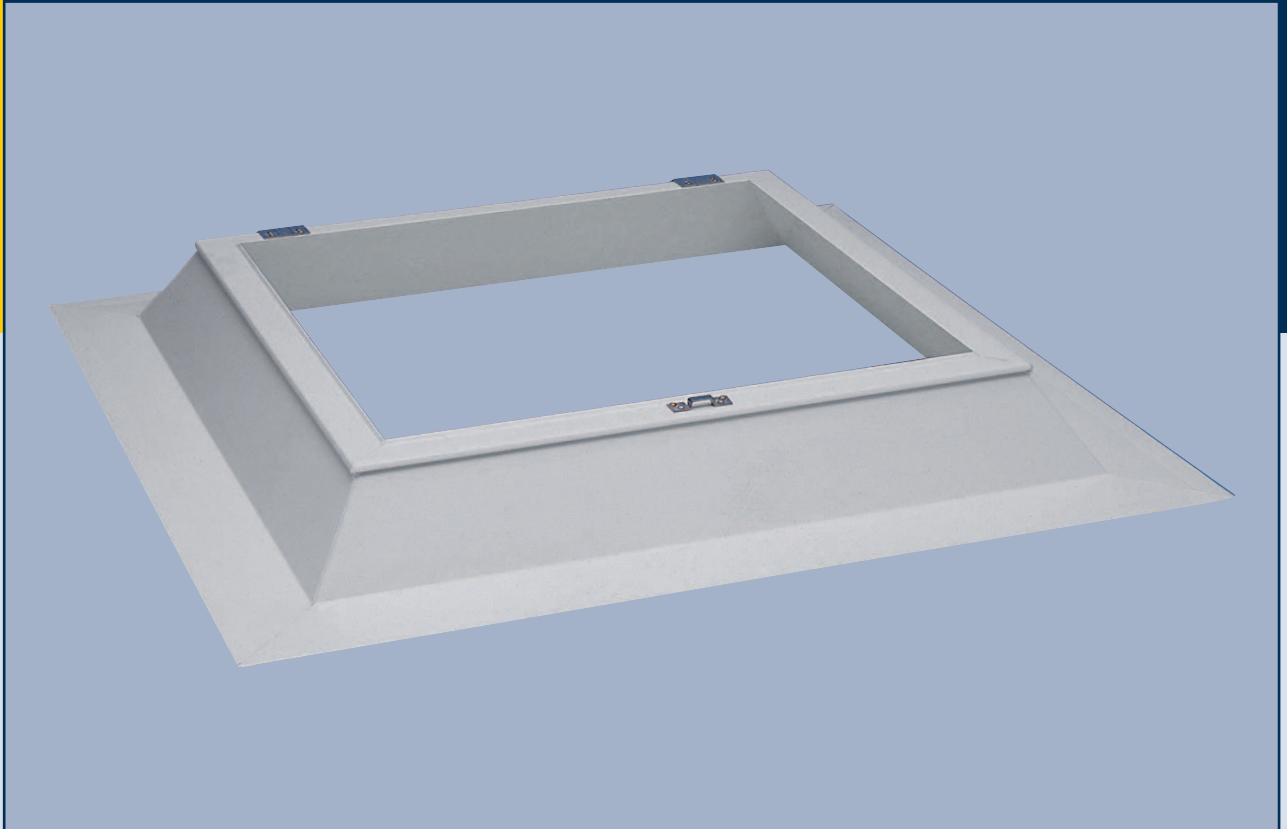
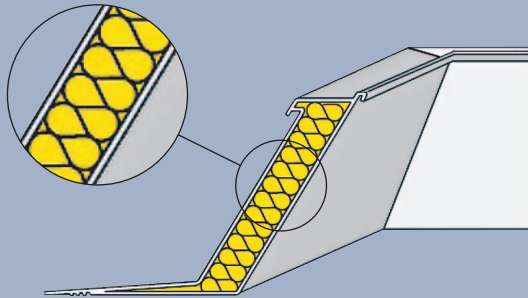


ESSMANN® PVC Skylight Base 15

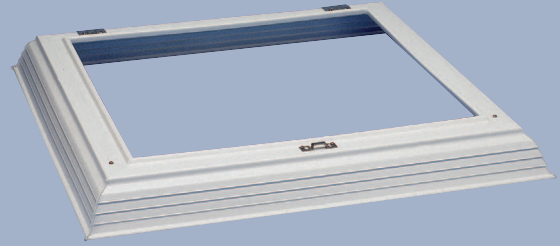


Product Description

ESSMANN® PVC Skylight Base 15



ESSMANN PVC skylight base 15



ESSMANN safety frame

The tried and trusted, heat insulated PVC skylight base, installation height 15 cm

ESSMANN PVC skylight bases, installation height 15 cm, are made of U-PVC. They are the system component for the quick and easy installation of skylight domes.

They are installed directly on the bearing structure.

The PVC skylight base 15 is designed to be free of thermal bridges and is additionally heat insulated all round. The skylight base is, of course, suitable both for the homogeneous connection of PVC, PEC, VAE and EVA roof sheeting and for the full-surface integration of bitumen roof sheeting. Ventilation units can be quickly and easily installed with the help of the fixed fastening points on the skylight base.

The contact edge of the base has an extruded drip edge all round and is used to install all of the hardware, or to fasten the ESSMANN safety frame.

The ESSMANN PVC skylight base 15 is the ideal solution for daylight utilisation and natural aeration and ventilation applications. With the help of the appropriate fastenings for the respective subsurface, the skylight base can be installed on all standard substructures on the flat roofs and roofs of industrial, commercial and retail buildings up to a roof slope of max. 25°. The scope of application can be extended accordingly by combining

the base with other ESSMANN system components.

The benefits of the PVC skylight base 15 at a glance:

- Base design with heat insulation all round, meets the requirements for daily aeration and ventilation, and daylight utilisation
- Compatible with all ESSMANN skylight domes and many other ESSMANN system components
- Customised sizes available for renovation solutions
- Quick and easy to install



The ESSMANN PVC skylight base 15 can be supplied with up to two ESSMANN fall arrest safety consoles (FAS) to provide fall protection!

	PVC SB 15	Standard
U value (skylight base) U_{kr}	1.3 W/(m ² K)	DIN EN1873 ¹⁾
Geometric extraction face/Incident light area A_g	0.16-5.04 m ²	
Fire behaviour	E	EN 13501-1
Fire behaviour	B2	DIN 4102

¹⁾ Calculated by Fraunhofer Institute acc. to their test report P7-079/2006

Further information can be found at www.essmann.de

ESSMANN GmbH
 Im Weingarten 2
 D-32107 Bad Salzflun
 Telephone +49(0)5222.791-0
 Fax +49(0)5222.791-236
 E-Mail info@essmann.de
www.essmann.de